



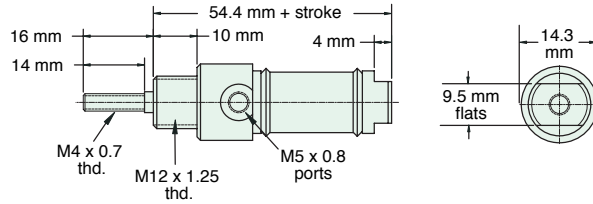
16 MM BORE STAINLESS STEEL METRIC CYLINDER

M-SDR-10-□-□

Double Acting



Mount: Stud **Standard Stroke Lengths:** 10 mm, 25 mm, 40 mm, 50 mm, 80 mm, 100 mm, 125 mm, 160 mm, 200 mm, 250 mm
Type: Rotating Rod
Options: B, V



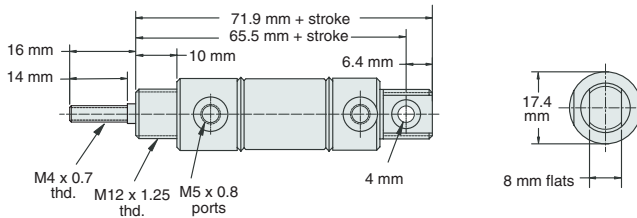
Nut included, but not shown on drawing

M-UDR-10-□-□

Double Acting



Mount: Universal **Standard Stroke Lengths:** 10 mm, 25 mm, 40 mm, 50 mm, 80 mm, 100 mm, 125 mm, 160 mm, 200 mm, 250 mm
Type: Rotating Rod
Options: B, V Mounting nuts not included. Part No. NM12-125 may be ordered separately.



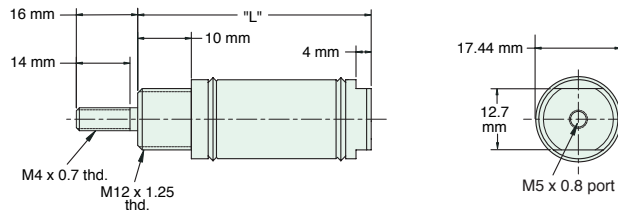
Furnished without nut(s). Order Part No. [NM12-125](#).

M-SSR-10-□-□

Single Acting



Mount: Stud **Standard Stroke Lengths:** 10 mm, 25 mm, 40 mm, 50 mm, 80 mm, 100 mm, 125 mm, 160 mm
Type: Rotating Rod
Options: B, V



Nut included, but not shown on drawing

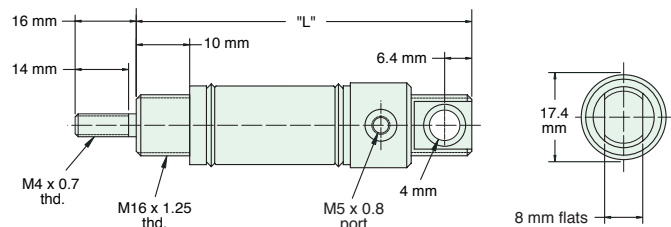
"L" (mm) for Standard Strokes								
Stroke	10	25	40	50	80	100	125	160
	56	83	120	130	193	224	260	329

M-USR-10-□-□

Single Acting



Mount: Universal **Standard Stroke Lengths:** 10 mm, 25 mm, 40 mm, 50 mm, 80 mm, 100 mm, 125 mm, 160 mm
Type: Rotating Rod
Options: B, V



Furnished without nut(s). Order Part No. [NM12-125](#).

"L" (mm) for Standard Strokes								
Stroke	10	25	40	50	80	100	125	160
	73	100	137	141	210	241	278	346